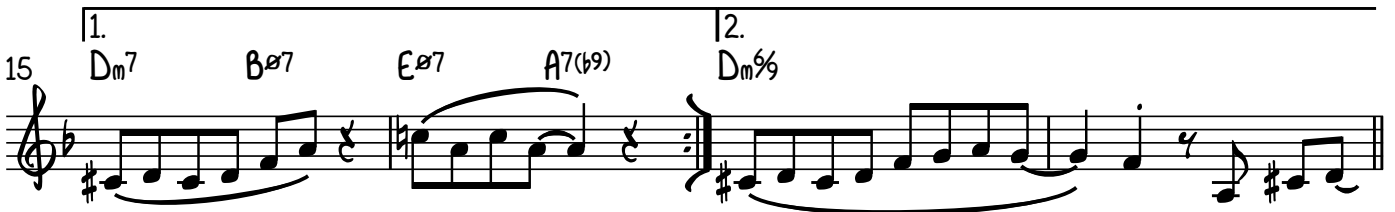
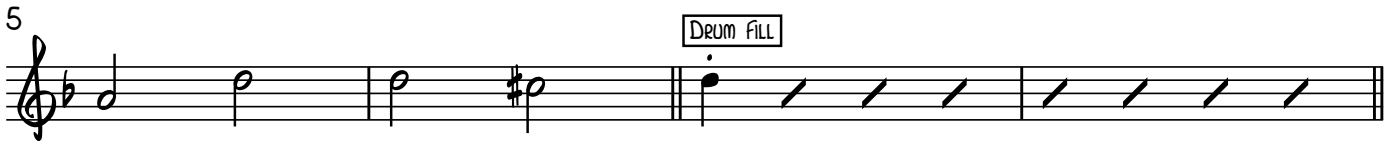


HYMN OF THE ORIENT

GIGI GRyce

PIANO INTRO



2

C

27 Dm Dm7/C Bø7 Bb7 A7(b9) Gm7 D/F# Bb/F

31 Eø7 A7(b9) Dm9/6 A7(b9) Dm9/6

D

35 Gm7 Eø7 Fø7 Bb7(b5) A7(b9)

FINE

SOLO BREAK

E

41

SOLOS OVER 'A' 'A' 'B' 'C'

F

42 Dm7 Dm/C B7 Bb7 A13(b9) Gm7 F#7(#9/5) E7(b9) F7 Bb7 A7(b9)

BACKGROUNDS OVER FORM

48

1. 2.

52 Ebmaj7(#11) Abmaj7(#11) Dbmaj7(#11) Gbmaj7(#11)

-- 4 BARS --

BACK TO 'F' 2ND ENDING

G

Dm Dm7/C Bø7 Bb7 A7(b9) Gm7 D/F# Bb/F

Eø7 A7(b9) Dm Bø7 Eø7 A7(b9) Dm9/6

1. 2.

BACK TO 'B' THRU FINE