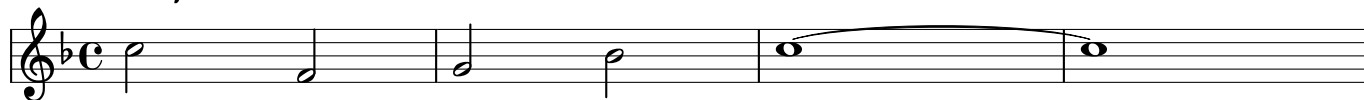


Concert
♩ = 180 / Swing

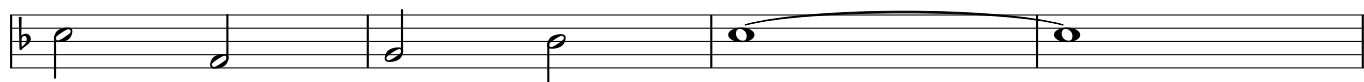
A Foggy Day

Gershwin
arr. Doug Walker

Intro V pedal...



Hits on 2 & 4



A FΔ⁷

A⁰7

D7^{b9}

G-7

C¹³



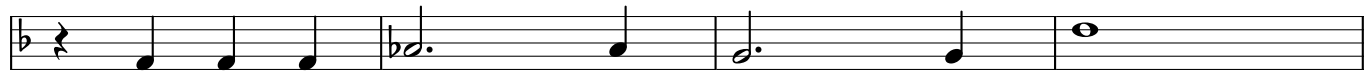
Swing ...

E^b9

D7^{#11}

D^b7^{#11}

C⁹



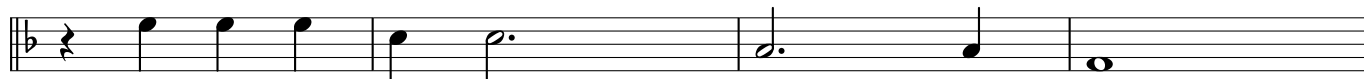
FΔ⁷

C-7

F7

B^bΔ⁷

E^b7



A-7

D7

B⁰7

E7^{b9}

B^b7

E^b7



B A^bΔ⁷

D^bΔ⁷

C⁰7

F7^{b9}

B^b-7

E^b13

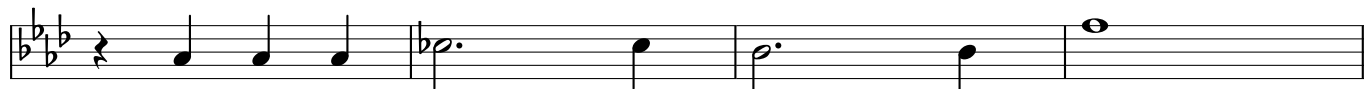


G^b9

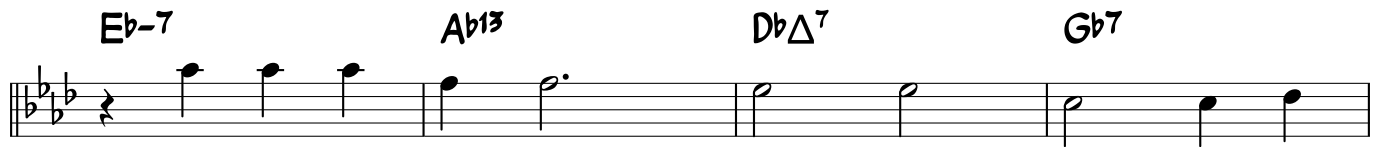
F7^{#11}

E7^{#11}

E^b9



$E\flat-7$ $A\flat^{13}$ $D\flat\Delta^7$ $G\flat7$



$A\flat^6/E\flat$ $B\flat-7/E\flat$ $C-7/E\flat$ $D\flat-7/E\flat$ $C-7/E\flat$ $F-7/E\flat$



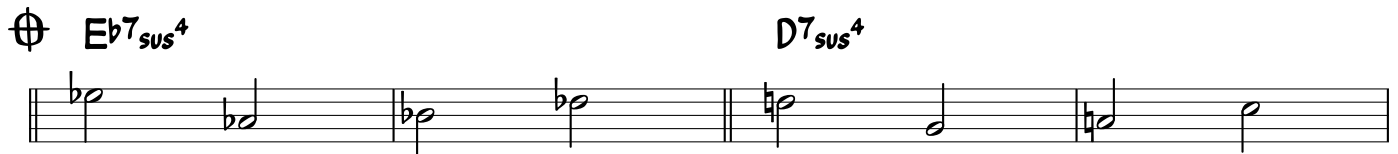
Pedal. Hits on 2 & 4 ...

$B\flat-7/E\flat$ $E\flat7$ $G\flat\Delta^9$



D.S. for Solos
after Solos, D.S. al Coda

$E\flat7_{sus^4}$ $D7_{sus^4}$

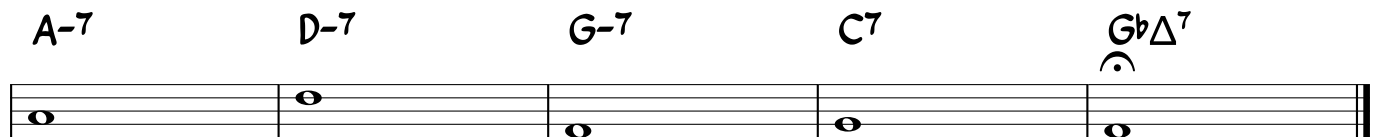


Hits on 2 & 4 ...

$C\sharp7_{sus^4}$ $C7_{sus^4}$



$A-7$ $D-7$ $G-7$ $C7$ $G\flat\Delta^7$



Whole Notes

rit...

Fine