

# Bb Lead

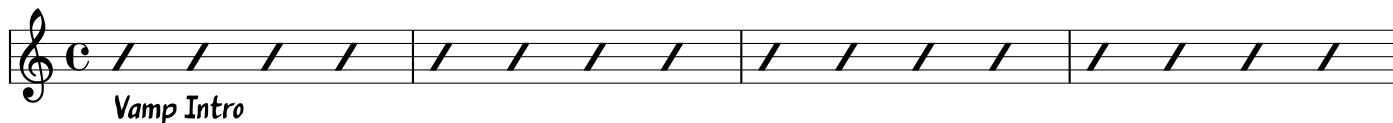
# Margaret's Road

Doug Walker

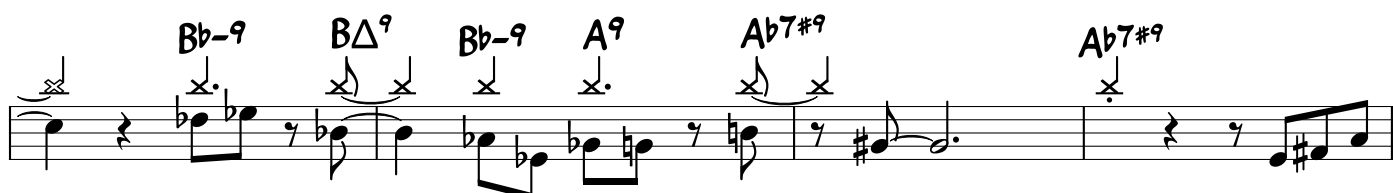
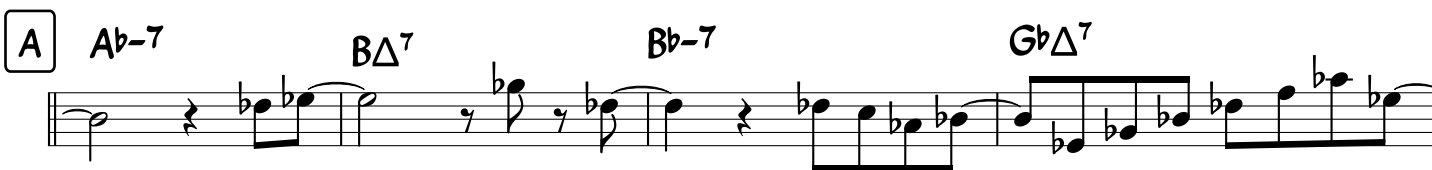
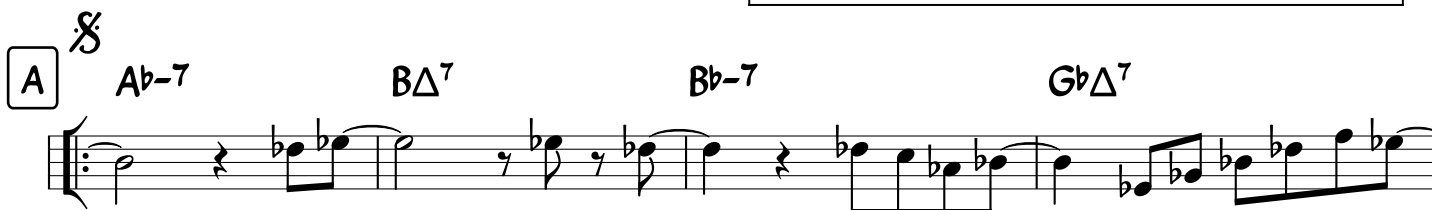
Slow Funk/Samba

♩ = 150-160

Ab13#9



Ab7#9



**B**  $D^6$   $A/C^\sharp$   $G\Delta^{7\sharp 11}$   $F^\sharp-7$   $B/D^\sharp$

$D^6$   $A/C^\sharp$   $A/C^\sharp$   $C\Delta^{13\sharp 11}$

Band Out

**A**  $A^b-7$   $B\Delta^7$   $B^b-7$   $G^b\Delta^7$

$B\Delta^7$   $B^b-7$   $A^b7^\sharp 9$   $B^b-9$   $B\Delta^9$   $B^b-9$   $A^9$   $A^b7^\sharp 9$  To Coda  $\oplus$

**D**  $B^b-9$   $B\Delta^9$   $B^b-9$   $A^9$   $A^b7^\sharp 9$   $B^b-9$   $B\Delta^9$   $B^b-9$   $A^9$   $A^b7^\sharp 9$

Begin Solo...

$B^b-9$   $B\Delta^9$   $B^b-9$   $A^9$   $A^b7^\sharp 9$   $B^b-9$   $B\Delta^9$   $B^b-9$   $A^9$

**E**  $A\flat-7$   $B\Delta^7$   $B\flat-7$   $G\flat\Delta^7$

$B\Delta^7$   $B\flat-7$   $A\flat7\#9$   $B\flat-9$   $B\Delta^9$   $B\flat-9$   $A^9$

**F**  $A\flat13\#9$

**G**  $D6$   $A/C\#$   $G\Delta^7\#11$   $F\#-7$   $B/D\#$

$D6$   $A/C\#$   $C\Delta^{13}\#11$   $E\flat7\#9$

**H**  $A\flat7\#9$   $B\flat-9$   $B\Delta^9$   $B\flat-9$   $A^9$   $A\flat7\#9$   $B\flat-9$   $B\Delta^9$   $B\flat-9$   $A^9$   $A\flat7\#9$

Next Solo overlaps here, then Repeats to E

D.S. al Coda

$\oplus$   $A\flat7\#9$   $B\flat-9$   $B\Delta^9$   $B\flat-9$   $A^9$   $A\flat7\#9$   $B\flat-9$   $B\Delta^9$   $B\flat-9$   $A^9$   $A\flat7\#9$

$A\flat13\#9$

Vamp & Fade